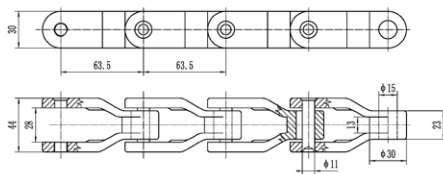
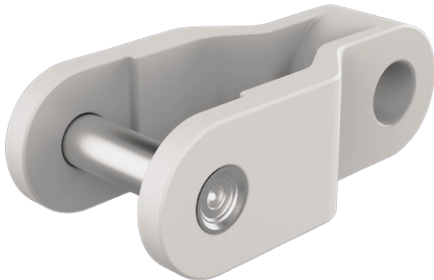
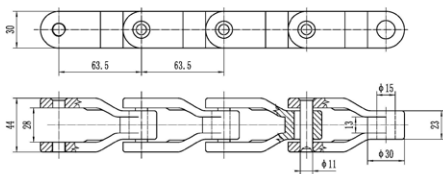


CC600 and D600 Conveyor Chains

CC600 and D600 conveyor chains are designed to meet the demands of various industrial applications, specifically tailored for the efficient movement of gas bottles*, crates, and cartons.

Engineered with precision and built to last, these chains offer unparalleled performance in conveyor systems.



PRODUCT CODE		CHARACTERISTICS							
	Pitch P (mm)	L (mm)	Diam. E (mm)	B (mm)	H (mm)	J (mm)	G (mm)	Work. Load Max N (21°C)	Weight kg/m
CC600	63.5	43	11.0	18.0	28.5	-	-	6500	4.83

PRODUCT CODE		CHARACTERISTICS							
	Pitch P (mm)	L (mm)	Diam. E (mm)	B (mm)	H (mm)	J (mm)	G (mm)	Work. Load Max N (21°C)	Weight kg/m
D600	63.5	43	11.0	18.0	28.5	-	-	6000	1.44

CC600

Plates: Self-lubricating cast metal, ensuring a smooth operation with minimal maintenance.

Pins: Constructed from austenitic chrome-nickel stainless steel, the pins are work-hardened to offer high resistance to wear and tear, making them ideal for continuous and heavy-duty use.

*The chains are not ATEX certified

Standard shipping lengths: Available in segments of 96 pitches, translating to 20 feet or 6.096 meters.

For more information or to place an order, please contact our sales team.

D600

Plates: Self-lubricating acetal resin, colored white to suit environments that require clean and visually appealing equipment.

Pins: Made from high-resistance, work-hardened austenitic chrome-nickel stainless steel, ensuring durability and longevity.

t: +44 (0) 161 498 4600
e: info.uk@renold.com
w: renold.com